



VILBER FUSION FX5

Power and versatility

The Fusion FX5 is an image acquisition system for the capture of chemiluminescent and fluorescent gel images.

The 2 megapixels cooled scientific CCD camera acquires high sensitivity and high-resolution images for multiple applications. Our unique darkroom accommodates a transilluminator for fluorescence applications and a separate tray for Western-blot imaging.

Together with Bio-Profil software, Fusion FX5 forms a versatile and powerful system for quantification and documentation.

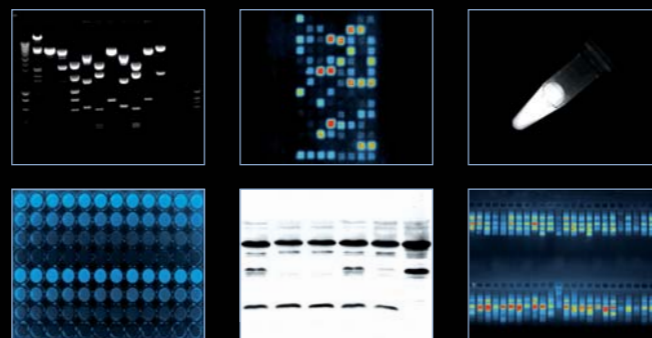


> KEY FEATURES

- Unparalleled sensitivity
- One instrument for chemiluminescence and fluorescence
- Latest generation of cooled CCD sensor
- 2 Megapixels imaging / FireWire® interface
- Pure image integrity and access to the raw data
- Lens feedback controls
- Exclusive VILBER's UV Master™ technology
- Image Master assistant to easily get the optimum image
- Convenient versatile darkroom with multi-positions filter slide
- Compatible with the Super-Bright transilluminator technology



> PHOTO GALLERY



> APPLICATIONS

- **CHEMILUMINESCENCE DETECTION**
ECL™, ECL Plus™, ECL Advance™, ECL Plex™, CDP Star™, Qdot™, Super Signal™, CSPD™
- **PROTEIN DETECTION**
Coomassie blue, Sypro™ Ruby, Sypro™ Orange, Sypro™ Red, Silver Star™, Fluorescein, Qdot™
- **OTHER**
Petri dish imaging
Microplate imaging
Autoradiograph imaging
- **NUCLEIC ACID DETECTION**
Ethidium bromide, SYBR™ Green, SYBR™ Gold, Texas Red™, Gel Star™

> TESTIMONIALS

“ The FUSION FX5 delivers very high performance for a large number of applications. This is an incredibly versatile system. ”

Together with the StarLight module for red, blue and green, we use it for applications such as GFP, SYBR Green, Western-blot, Luciferase and standard gel documentation. This is really the all-in-one necessary in our lab.





VILBER FUSION SL

Performance at a budget



SPECIFICATIONS

	FUSION FX7	FUSION FX5	FUSION SL
Camera and optics	Monochrome scientific grade CCD camera Real time and integration time Grade 0, zero defect Progressive scan – Low dark current 4.2 megapixels 2048 H x2048 V Cooling: -67°C to operating temperature (-42°C absolute & regulated) Motorised f:095 lens with autofocus and lens feedback control	Monochrome scientific grade CCD camera Real time and integration time Grade 0, zero defect Progressive scan – Low dark current 2 megapixels 1600 H x1200 V Cooling: -50°C to operating temperature (-25°C absolute & regulated) Motorised f:095 lens with autofocus and lens feedback control	Two models: > Fusion SL4 4.2 megapixels 2048 H x2048 V Cooling: -67°C to operating temperature (-42°C absolute & regulated) > Fusion SL2 2 megapixels 1600 H x1200 V Cooling: -50°C to operating temperature (-25°C absolute & regulated) Manual or motorised lens options
Pixel depth	True 16-bit, 65 536 grey levels	True 16-bit, 65 536 grey levels	True 16-bit, 65 536 grey levels
Sensitivity	Ultimate camera sensitivity Ideal for ECL™, ECL Plus™, ECL Advance™, CDP Star™, ECL Advance™, Super Signal™, CSPD™ and for fluorescence applications	Very high sensitivity Ideal for ECL™, ECL Plus™, ECL Advance™, CDP Star™, ECL Advance™, Super Signal™, CSPD™ and for fluorescence applications	Ideal for ECL™, ECL Plus™, ECL Advance™, CDP Star™, ECL Advance™, Super Signal™, CSPD™ and for fluorescence applications
Software	Fusion systems are supplied with the Fusion-Capt software for image enhancement and basic image analysis The Fusion images are compatible with Bio-1D and Bio-Gene software for quantification: transform your 1D gel into 3D results		

CONFIGURATIONS

Darkroom

Fully automatic system with motorised lens, motorised filter wheel, & automatic lighting controlled by software. True protocol-driven image acquisition. Includes a slide-out build-in transilluminator & UV security switch Multiposition filter wheel Separate tray for Western-blot imaging. Upgradable to StarLight module Uniform white light or UV light epi-illumination sources Optional Super-Bright UV filter technology UV to white light or UV to blue light conversion screen available	Fully automatic system with motorised lens, motorised filter wheel, & automatic lighting controlled by software. True protocol-driven image acquisition. Includes a slide-out build-in transilluminator & UV security switch Multiposition filter wheel Separate tray for Western-blot imaging. Upgradable to StarLight module Uniform white light or UV light epi-illumination sources Optional Super-Bright UV filter technology UV to white light or UV to blue light conversion screen available	Separate tray for Western-blot imaging. Optional transilluminator Manual filter wheel Upgradable to StarLight module Uniform white light or UV light epi-illumination sources
--	--	---

> KEYS FEATURES

- Cost effective solution
- One instrument for chemiluminescence and fluorescence
- State of the art optics and CCD camera / USB2 interface
- Exquisite sensitivity / 2 or 4.2 megapixels
- Fantastic ease of use
- Image Master assistant feature to easily get the optimum image
- Pure image integrity and access to the raw data
- Unique VILBER filters for precise imaging & superior results
- Upgradeable system for enhanced versatility
- Exclusive VILBER's UV Master™ technology

> APPLICATIONS

- **CHEMILUMINESCENCE DETECTION**
ECL™, ECL Plus™, ECL Advance™, ECL Plex™, CDP Star™, Qdot™, Super Signal™, CSPD™
- **PROTEIN DETECTION**
Coomassie blue, Sypro™ Ruby, Sypro™ Orange, Sypro™ Red, Silver Star™, Fluorescein, Qdot™
- **OTHER**
Petri dish imaging
Microplate imaging
Autoradiograph imaging
- **NUCLEIC ACID DETECTION**
Ethidium bromide, SYBR™ Green, SYBR™ Gold, Texas Red™ Gel Star™